

# ACTIVITY 3: COLLECTION DISCOVERY TRAIL

Australia's most celebrated cricketer was born in 1908 in Cootamundra, grew up in Bowral, moving to Sydney at the age of 18 to pursue his cricket ambitions at a high level.

Let's start exploring this story at the Club cricket level. Head to **THE CLUB CABINET**.

## CLUB CABINET

Sir Donald played for 4 clubs across his cricket career.  
Name these clubs below:

Record a memorable achievement at club level of his cricket career:

## STATE CABINET

Look at the cricket bats displayed here.

In the previous activity, you discovered that his 452 (not out) was a world record score in 1930. You will notice other bats and trophies presented here.

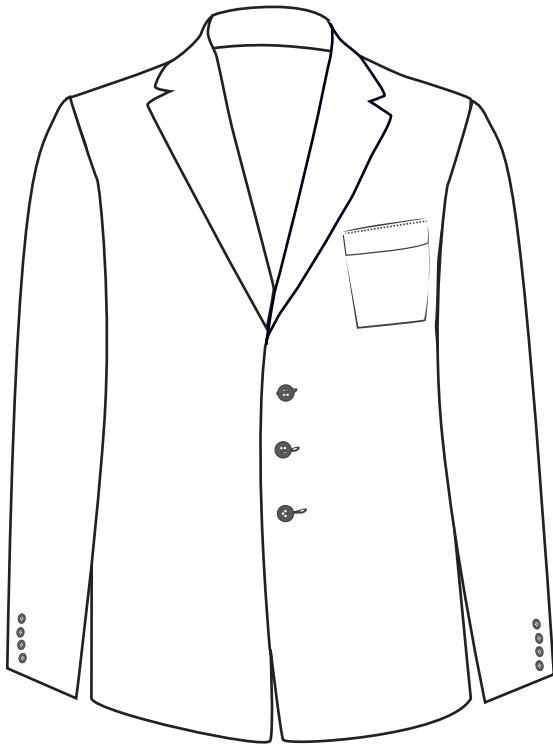
What other batting achievement is commemorated here?



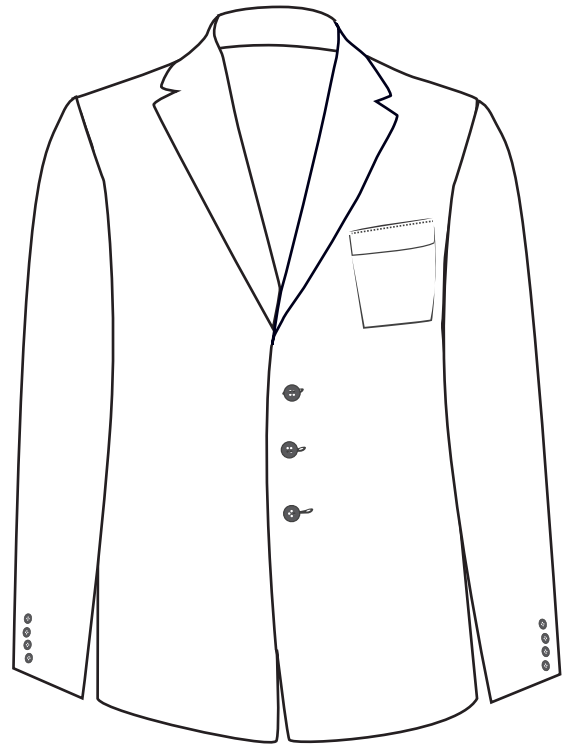
## ACTIVITY 3: COLLECTION DISCOVERY TRAIL

Observe the State blazers in the cabinet.

Draw the differences you notice between the 1920s New South Wales blazer and the 1930s South Australian blazer. You might like to even try to draw the State logos shown on the pocket.



**1920S, NEW SOUTH WALES**



**1930S, SOUTH AUSTRALIA**

## TEST CABINET

View the Australian blazer and iconic baggy green hat from the 1940s.

Now compare this with these garments worn in the modern era by Australian Test Cricketer, Steve Smith.

Do you believe that these items of team uniform have changed very much?

Why do you think they have remained quite similar?



# ACTIVITY 3: COLLECTION DISCOVERY TRAIL

## LOCKER

The **LOCKER** features some interesting facts about Don Bradman around the outside for you to read. It also features some of the clothing and equipment from earlier in the 20th century.

How does this compare to the clothing and equipment used for cricket in the modern day?  
Use the pictures of David Warner playing both Test and One Day International cricket to assist.



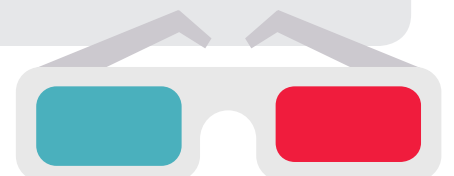
TEST CRICKET



ONE DAY INTERNATIONAL CRICKET

## THEATRETTE

Head over the **THEATRETTE** and sit on the original Adelaide Oval benches to observe the film. How do you think the quality and style of film technology has changed today?

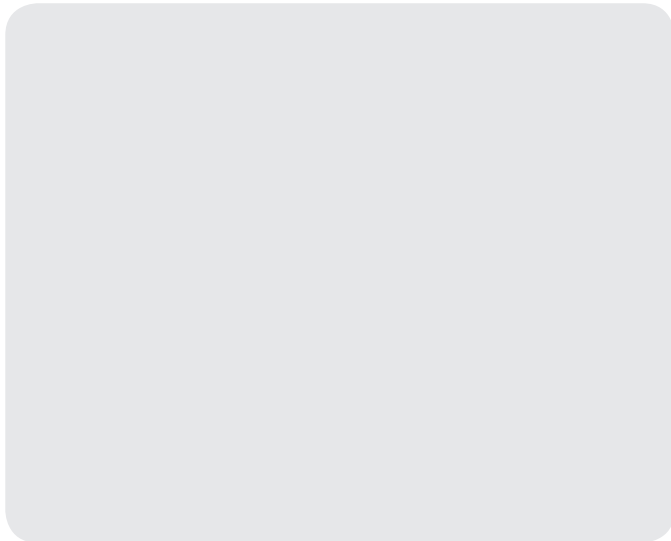


# ACTIVITY 3: COLLECTION DISCOVERY TRAIL

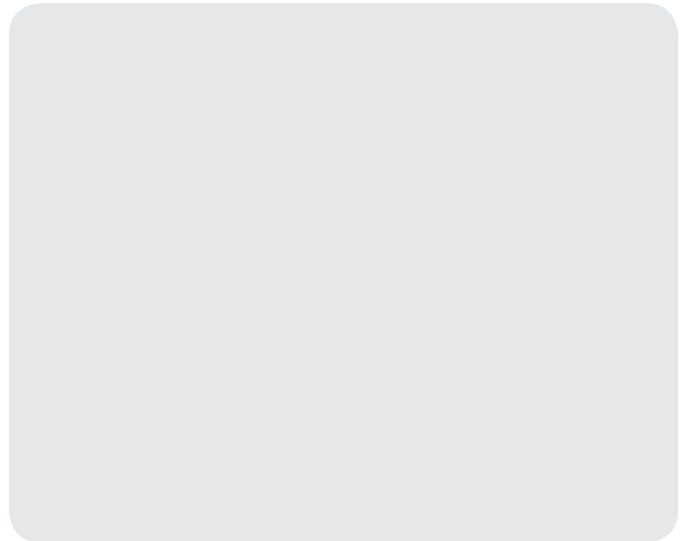
## THEATRETTE

Draw a picture of the historic seats you are sitting on.

Now go and have a look at the modern seats outside in the stadium to compare their styles.

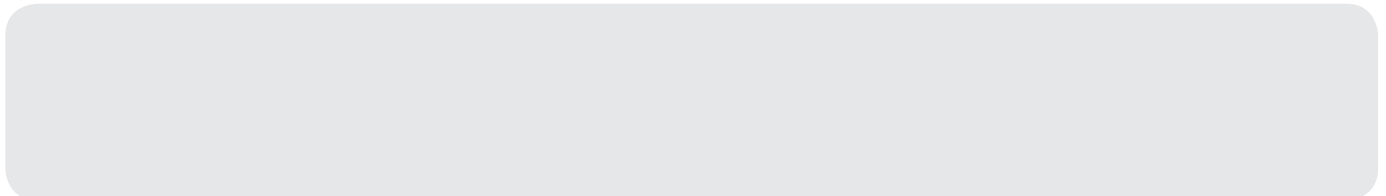


**OLD SEATS**



**NEW SEATS**

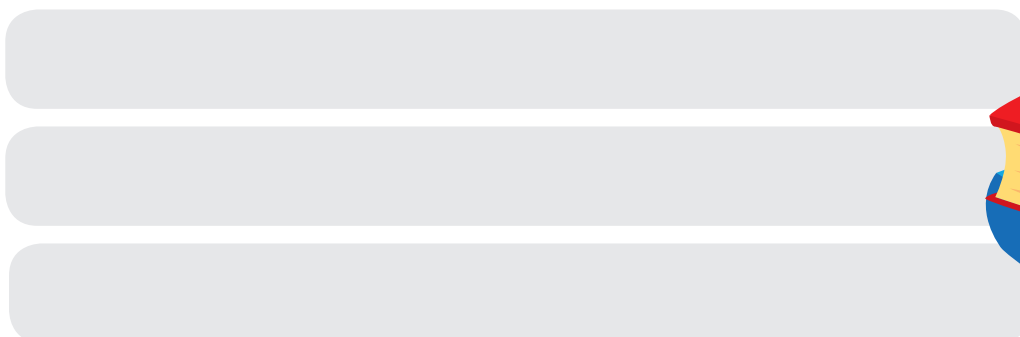
What has changed and what are some benefits of such changes?



## WRITER CABINET

You now know that there are 24 historic books on display here.

Record THREE of the book titles.



# ACTIVITY 3: COLLECTION DISCOVERY TRAIL

## WRITER CABINET

Bradman's 'How to Play Cricket' book was one of his first undertakings as a writer.

Read the text on the cabinet glass to find out what year this was first published:



You will also notice there are 3 videos on the shelf.

What is our more modern version of this technology for films and movies?

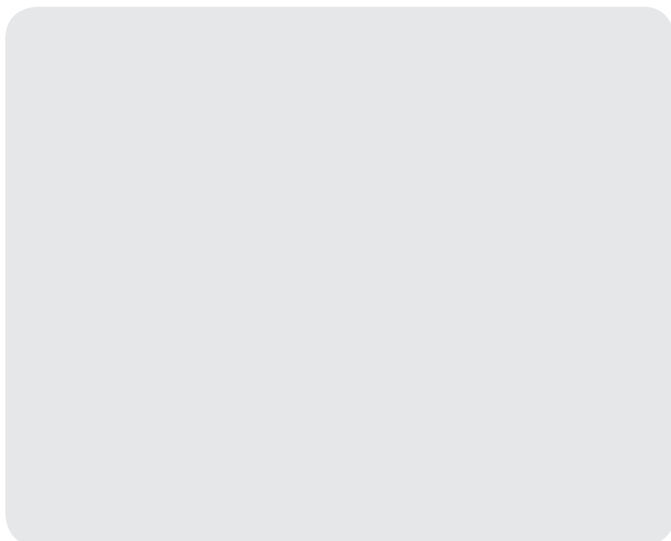
What other historic forms of technology are featured in this cabinet and how have we replaced these in more recent times?

## LOUNGE

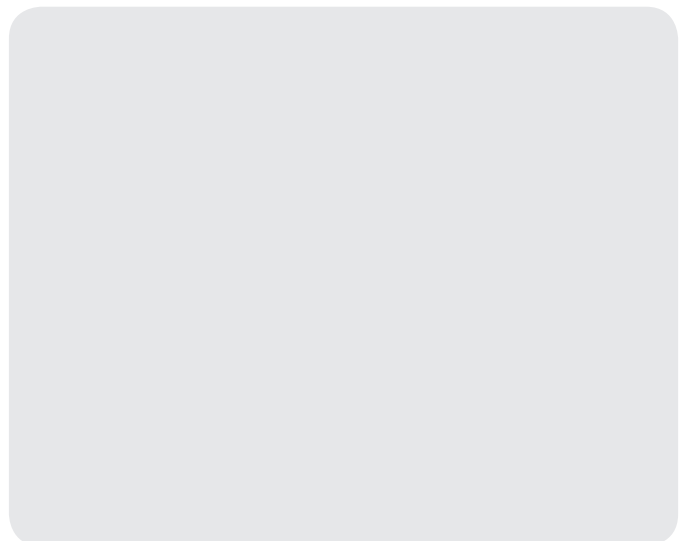
Within Bradman's life, there was the invention of revolutionary media technology.

Two items are shown in this display.

Draw pictures of the two forms of media technology exhibited in this display:



**GRAMOPHONE**



**WIRELESS RADIO**

# ACTIVITY 3: COLLECTION DISCOVERY TRAIL

## LOUNGE

During this time of the 20th century, lounge room design was altered from the more common 'piano being the centrepiece of the room' for family musical activities to instead listening to the gramophone and wireless radio. What forms of entertainment technology now feature in the modern household?

List some positive and negatives for these changes to the lounge room design over time.

### POSITIVES

### NEGATIVES

## PHOTO WALL

Don is pictured with a range of famous faces here including British Royalty, Australian Prime Ministers, sporting greats and his family.

The photo wall also shows him engaging in talents and hobbies other than cricket including:

Have a look at the text on this wall: 'Outside of the Game':

List some of his jobs that he worked during his lifetime.

How is the fact he worked full time as well as being a professional cricketer different to the modern-day sportsman? Why do you think this is?

# ACTIVITY 3: COLLECTION DISCOVERY TRAIL

## NEWSPAPER WALL

Draw your favourite headline shown on the wall.

